

92 gmc 5 speed manual transmission



File Name: 92 gmc 5 speed manual transmission.pdf

Size: 3100 KB

Type: PDF, ePub, eBook

Category: Book

Uploaded: 1 May 2019, 14:46 PM

Rating: 4.6/5 from 722 votes.

Status: AVAILABLE

Last checked: 4 Minutes ago!

In order to read or download 92 gmc 5 speed manual transmission ebook, you need to create a FREE account.

[**Download Now!**](#)

eBook includes PDF, ePub and Kindle version

[Register a free 1 month Trial Account.](#)

[Download as many books as you like \(Personal use\)](#)

[Cancel the membership at any time if not satisfied.](#)

[Join Over 80000 Happy Readers](#)

Book Descriptions:

We have made it easy for you to find a PDF Ebooks without any digging. And by having access to our ebooks online or by storing it on your computer, you have convenient answers with 92 gmc 5 speed manual transmission . To get started finding 92 gmc 5 speed manual transmission , you are right to find our website which has a comprehensive collection of manuals listed.

Our library is the biggest of these that have literally hundreds of thousands of different products represented.



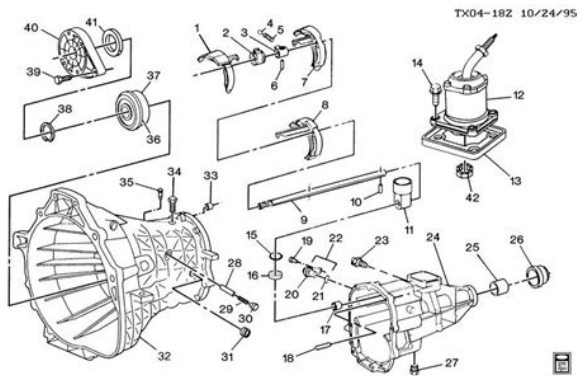
Book Descriptions:

92 gmc 5 speed manual transmission



Through the 1950s, all makers were working on their own automatic transmission, with four more developed inside GM alone. All of GMs early automatic transmissions were replaced by variants of the TurboHydramatic by the 1970s. Manually shifted on Column. The basic rearwheel drive TurboHydramatic spawned two frontwheel drive variants, the transverse TurboHydramatic 125, and the longitudinal TurboHydramatic 425. A third variant was the lightduty rear wheel drive TurboHydramatic 180 used in many European models. Also manufactured and used by Holden as the Trimatic transmission. Ford led the design of the 10speed transmission, as well as filing the design patents for said transmission. According to an official report by the SAE Society of Automotive Engineers the design of the 10speed gearbox is essentially all Ford, while GM was responsible for designing the 9speed 9T transverse automatic gearbox. As part of their jointventure, Ford will let GM use the 10speed transmission with rights to modify and manufacture it for their own applications. Retrieved 20190716. Retrieved 20190716. By using this site, you agree to the Terms of Use and Privacy Policy. It can be identified by its twopiece aluminum case with integrated bell housing and topmounted tower shifter. However the Jeep NV3550 bellhousing bolts to the transmission case. Externally the earlier GM units look like the NV3500; however the internal components were extensively redesigned. The second design has a much larger single ball bearing. Small trucks S10 etc. M50 Retrieved 20081016. CS1 maint archived copy as title link Retrieved 20080213. CS1 maint archived copy as title link By using this site, you agree to the Terms of Use and Privacy Policy. The NV4500 appeared on 1992 fullsize trucks only. Locating the manufacturers tag, if present, is the easiest form of identification for all models, with visual methods reserved for general identification. <http://spb.ledcraft.ru/source/endohm-instruction-manual.xml>

- 1.0.



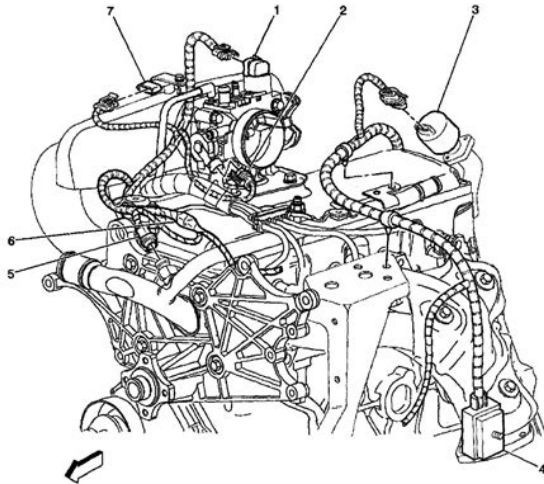
Positive identification of these transmissions is accomplished through internal methods, especially when differentiating the HM290, 5LM60 and NV3500 models. Since the differences between these three are internal, removing the transmission is necessary. Step 1 Look for the manufacturers tag, usually attached to a bolt on the transmission extension housing. This tag identifies the manufacturer and the model transmission. According to Motivegears Domestic Truck Transmission Identification Guide, Borg Warner T5 transmissions are all aluminum, fivespeed, toploading transmissions with the bell housing not integral to the unit. The NV4500 is a toploading, cast iron, heavy duty transmission with an aluminum shift cover. Weighing around 200 pounds, the NV4500 may have a warning label located on the case designating the use of Castrol Syntorque fluid only. Toploading transmissions have an access plate bolted to the top of the unit. Since these differences are internal, including gear ratio and bearing specifics, the transmission has to be torn down for proper identification. Each of these models were manufactured by a different company and each employed its own design changes. Refer to a listing, such as the one found on Drivetrain.com, for proper identification specifics. References Drivetrain.com General Motors Manual Transmission Reference Drivetrain.com Getrag HM290 Manual Transmission Overhaul Kit British V8 Identification Guide to BorgWarner T5 Transmissions Drivetrain.com Getrag 290 Parts Illustration Manual Transmission About the Author This article was written by the It Still Works team, copy edited and fact checked through a multipoint auditing system, in efforts to ensure our readers only receive the best information. To submit your questions or ideas, or to simply learn more about It Still Works, contact us. How to Identify a BorgWarner T10. How to Locate a TREMEC Part Number How to Identify Ford Automatic. <http://www.cargoservice.pl/cargoservice/userfiles/endomed-433-user-manual.xml>



How to Identify a NV3500 Transmission How to Identify a TurboHydromatic. How to Identify a 350 Transmission How do I Identify an Automatic. We can contact you via phone or email. We offer a complete line of new, remanufactured, OE replacement and performance manual transmissions, Transfer cases, and differentials along with quality components for rebuilding and repair. We offer

parts for a variety of makes and models of foreign and domestic passenger cars, SUVs and light duty trucks. As manual transmissions become a less popular option offered by most original equipment suppliers, many aftermarket remanufacturers have turned their attention to other volume based product lines. Zumbrota Drivetrain continues to focus directly on this segment of the market. The result is obvious, Zumbrota Drivetrain delivers some of the most dependable remanufactured five speed, six speed and transaxle manual transmissions available. Our ability to produce quality manual transmissions is due to the people and processes developed over the last 30 years. These processes are continuously reviewed to ensure the highest quality possible. Features Quality inspections are conducted 3 times during the remanufacturing process A preinspection is done to ensure the unit is free of case cracks, excessive wear and to catch other OEM related problems that many cores have A second inspection is conducted during the reman process to ensure all component parts meet OEM specifications A final postbuild inspection is done to ensure unit is built to our strict standards All units are quality inspected throughout the remanufacturing process to maintain our quality standard. All housings and top covers are cleaned utilizing our state of the art hydro blasting and rinsing process. This process is what brings all cases back to the OEM finish. Once youve seen it, youll understand what we mean.

100 percent inspection of internal parts, including gear wear checks, mainshaft straightness test and synchronizer testing. 100 percent replacement of seals, bearings, and other common wear components. All transmissions are dynamometer tested and ran through numerous real life scenarios. Units are shipped in high density plastic totes to help eliminate intransit damage. Located in Zumbrota, Minnesota, they offer some of the best and most affordable rebuilt drivetrain components. More specifically, they offer new, remanufactured, OE replacement, and performance manual transmissions, transfer cases, and differentials. Their expertise and massive 60,000 square foot facility allow them to produce highquality and affordable components for thousands of different automotive applications. Upgrade includes additional labor, towing, rental car, and freight charge coverage. Standard and nofault Warranty coverage does not extend to commercial, farm vehicles, motorhomes and rental vehicle applications. Modified and or offroad applications are not covered by any warranty. We can contact you via phone or email. We offer quality rebuilt manual transmission, parts and rebuild parts kits that are designed to be top of the line. After locating correct unit a link is supplied to provide detailed information on specific kit and parts that are available for your unit. Information is provided for General Motors 3 speed, 4 speed, 5 speed and 6 speeds manual transmissions. Those from 195568 may have electric overdrive. Some of 196465 units have larger gears with the same tooth count as the 194068 units. Fully synchronized with 30 tooth synchro rings. 196669 units may have electric overdrive. It has a four step cluster and all the gears are helical cut. Has case casting number T161X. Found in heavy duty applications. Fully synchronized with 36 tooth synchro rings. This is the only GM 3 speed with the same bearing front and rear. This transmission is found in performance applications.



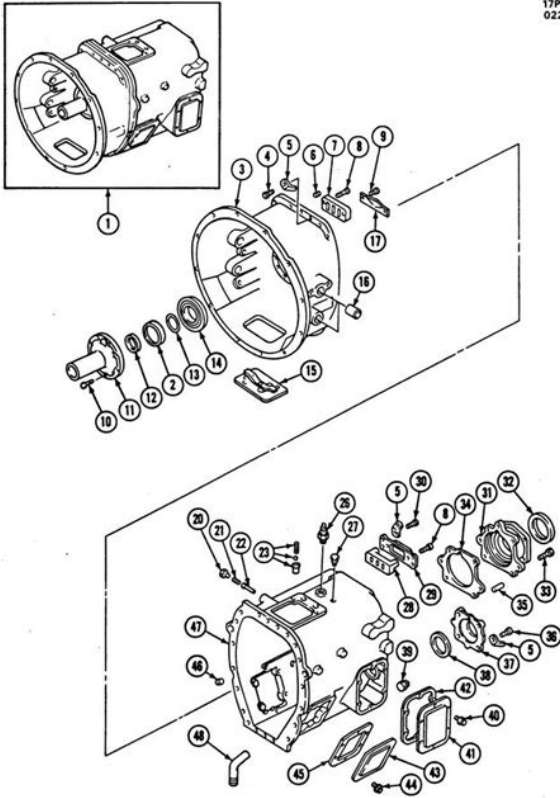
Legend

- | | |
|---|--|
| (1) Idle Air Control (IAC) Valve | (5) Engine Coolant Temperature (ECT) Sensor |
| (2) Throttle Position (TP) Sensor | (6) A/C Compressor Clutch Diode, S103 and S104 |
| (3) Exhaust Gas Recirculation (EGR) Valve | (7) Manifold Absolute Pressure (MAP) Sensor |
| (4) Underhood Fuse Block Connector C2 | |

<http://eco-region31.ru/bose-v18-manual>

Fully synchronized with 36 tooth synchro rings. Same unit as Ford RAT except for a GM bolt pattern to the bell housing. Has R282015 cluster gear. Found in heavyduty applications. Casting number T10XX or 1304 are on passenger side of case. They all have 9bolt side covers and 36 tooth synchro rings. Reverse shift lever is located in the extension housing, along with main shaft reverse which is a straight cut gear. Some of the early units, found mostly in Corvettes, have a front nut like the Muncie M21. 198488 units have overdrive. The side cover has 7 bolts and 2 shifter cams. The synchro rings have 36 teeth and the unit has a 4step cluster gear. Reverse gears are helical cut and are located in the extension housing. The side cover has 7 bolts and 3 shifter cams. The synchro rings have 30 teeth and the unit has a 5step cluster gear. Reverse gears are straight cut and are located in the main transmission case. Shifter assembly is attached to the top of the extension housing where the two arms meet. The main case is open at both ends, the bell housing. There is an internal singlerail shift linkage with the shifter mounted on top of the extension housing. Front and rear main bearings are ball type and the cluster gear has a shaft running through it, that is supported by loose needles. Case casting is number 1353. Front and rear main bearings are tapered. The cluster gear is solid and is supported on each end by cylindrical roller bearings located in the case. Case castings numbers are 1351 or 1352. The Isuzu logo is cast into the left side of the case. Is not found in the Chevy LUV. It has a rectangular cast iron front bearing retainer and a 27 tooth rear output shaft. The front and rear countershaft bearings are both 25x62x17. Sideloaded with either aluminum or cast iron case and used in both gas and diesel applications. All of these units are 3 speeds with Overdrive. All gears on the countershaft are removable except for 1st.

<http://atonenergia.com/images/canon-mr-14ex-manual-pdf.pdf>



Early units have threads on the input shaft and do not have a front seal. Has GM casting numbers and one P.T.O. covers. Nonsynchronized 1st with brass synchro rings for 2nd4th. All main shaft gears ride on bushings pressed on the shaft. The only gears that are removable from the countershaft are 3rd and 4th. Has GM casting numbers and two P.T.O. covers. Nonsynchronized 1st gear, synchronized 2nd4th. There are no brass synchro rings. Casting number is C9XXXX. All gears, including reverse, are helical cut. See New Process 435 for more information. Casting number is C9XXXX The bell housing. is not part of this transmission. It has a removable tube that the throwout bearing rides on. The main bearing in this unit is comprised of caged needles in shell races. Loose needles and flat thrust bearings are used throughout the transmission. Casting number is 1338. Limited parts availability. Isuzu logo is cast into the drivers side of the case. This is found only in GM diesel applications and has a different starter position than the unit that goes into the Isuzu vehicles. Aluminum case with top cover, internal singlerail shift with the shifter mounted on the extension housing. Casting numbers on the case, cover or extension housing are 1351 or 1352. 5th gear overdrive is located at the rear of the transmission in the extension housing. The cluster gear is supported on both ends by cylindrical roller bearings. The number on the front cluster gear is DK55836. All five synchro rings are brass. If you are unable, you can check the number of the front cluster bearing. The number on the front cluster gear bearing is 67010BCE. These similar transmissions have three different designs and designations. Teardown is necessary before ordering rebuild kit as the differences between them are integral. It is a fully synchronized Overdrive transmission including reverse. It may be identified by a tag attached to the P.T.O. cover. The four main supporting bearings in this unit are tapered.

<http://www.audaxdemolizioni.com/images/canon-mt-24ex-manual.pdf>



Reference Guide Parts illustration. To find out more about the cookies we use and how to control them, please visit our privacy, cookies and data protection page. After that things changed. My shifter moves like it is in neutral. When it is in Both engines are throttle body fuel injection. We found another Need to know if it is compatible to the 95. They are What does that mean and how do I find out which one my truck is Please refer to CarGurus Terms of Use. Content will be removed if CarGurus becomes aware that it violates our policies. Each transmission kit is engineered with factory-matched torque capacity ratings, helping ensure the transmission you purchase will stand up to the power of your engine. Chevrolet Performance customers are responsible for ensuring their use of Chevrolet Performance complies with applicable federal, state, and local laws, regulations, and ordinances. Many parts intended for racing or other “offhighway” use are not designed or tested for crashworthiness or to meet the safety needs of the motoring public, and may adversely affect the original intended performance or handling characteristics of the vehicle. These parts are designed and intended to be used with experts supervising their installation and use, to help assure the proper and safe operation of the vehicle. Chevrolet Performance customers are responsible for ensuring their use of Chevrolet Performance complies with applicable federal, state, and local laws, regulations, and ordinances. Many parts intended for racing or other “offhighway” use are not designed or tested for crashworthiness or to meet the safety needs of the motoring public, and may adversely affect the original intended performance or handling characteristics of the vehicle. These parts are designed and intended to be used with experts supervising their installation and use, to help assure the proper and safe operation of the vehicle. Individual retailer pricing may vary.

Please see your local dealer or retailer for details. Click here to see all Chevrolet vehicles destination freight charges. Full functionality requires compatible Bluetooth and smartphone, and USB connectivity for some devices. Requires compatible iPhone and data plan rates apply. Apple CarPlay is a trademark of Apple Inc. Siri, iPhone and iTunes are trademarks of Apple Inc., registered in the U.S. and other countries. Children are safer when properly secured in a rear seat in the appropriate child restraint. See the Owners Manual for more information. Cargo and load capacity limited by weight and distribution. Children are safer when properly secured in a rear seat in the appropriate child restraint. See your vehicle Owner’s Manual for more information. Certain services require working electrical system, cell service and GPS signals. OnStar links to emergency services. Visit onstar.com for more details. Visit onstar.com for more details. OnStar links to emergency services. Visit onstar.com for more details. Fees and taxes apply. To cancel you must call SiriusXM at 18666352349. See SiriusXM Customer Agreement for complete terms at siriusxm.com. All fees and programming subject to change. Sirius, XM, SiriusXM and all related marks and logos are trademarks of Sirius XM Radio Inc. Cargo and load capacity limited by weight and distribution. Your actual range may vary based on several factors including temperature, terrain, and driving technique. Cargo and load capacity limited by weight and distribution. Your actual range may vary based on several factors including temperature, terrain, and conditions. You will be charged at the current rates. Fees and taxes apply. To cancel you must call SiriusXM at 18666352349. All

rights reserved. The weight of passengers, cargo and options or accessories may reduce the amount you can tow. Cargo and load capacity limited by weight and distribution. Click here to see all Chevrolet vehicles destination freight charges.

<https://becro-plast.hr/wp-content/plugins/formcraft/file-upload/server/content/files/1627f14c17af02---brother-vx-1140-manual-free.pdf>

Requires the Android Auto app on Google Play and an Android compatible smartphone running Android TM 5.0 Lollipop or higher. Data plan rates apply. Android Auto is a trademark of Google LLC. Standard on L, LS. Available on LT. Cargo and load capacity limited by weight and distribution. Some devices require an adaptor or back cover. Visit onstar.com for more details. Before you buy a vehicle or use it for trailering, carefully review the Trailering section of the Owner's Manual. The weight of passengers, cargo and options or accessories may reduce the amount you can tow.

Requires the Android Auto app on Google Play and an Android compatible smartphone running AndroidTM 5.0 Lollipop or higher. Data plan rates apply. Android Auto is a trademark of Google LLC. Children are safer when properly secured in a rear seat in the appropriate child restraint. See the Owner's Manual for more information. Full functionality requires compatible Bluetooth and smartphone, and USB connectivity for some devices. Requires compatible iPhone and data plan rates apply. Apple CarPlay is a trademark of Apple Inc. Siri, iPhone and iTunes are trademarks of Apple Inc., registered in the U.S. and other countries. Children are safer when properly secured in a rear seat in the appropriate child restraint. See your vehicle Owner's Manual for more information.

Services subject to Terms and limitations. Certain services require working electrical system, cell reception, and GPS signal. OnStar links to emergency services. See onstar.com for details.

Availability subject to change. Services subject to Terms and limitations. Certain services require working electrical system, cell reception, and GPS signal. OnStar links to emergency services. See onstar.com for details. Availability subject to change. See siriusxm.com and onstar.com for details and limitations. Use only GM approved tire and wheel combinations. Unapproved combinations may change the vehicle's performance characteristics. Standard on L, LS.

Available on LT. Read the vehicle Owner's Manual for more important feature limitations and information. Children are safer when properly secured in a rear seat in the appropriate child restraint. See the Owners Manual for more information. Full functionality requires compatible Bluetooth and smartphone, and USB connectivity for some devices. Full functionality requires compatible Bluetooth and smartphone, and USB connectivity for some devices. Full functionality requires compatible Bluetooth and smartphone, and USB connectivity to some devices. Read the vehicle Owner's Manual for important feature limitations and information. The weight of passengers, cargo and options or accessories may reduce the amount you can tow. Full functionality requires compatible Bluetooth and smartphone, and USB connectivity for some devices. GM is not responsible for the safety or quality of independent supplier alterations. For more information, see the Recovery Hooks section of your Owners Manual. For more information, see the Recovery Hooks section of your Owners Manual. Full functionality requires compatible Bluetooth and smartphone, and USB connectivity for some devices. Requires compatible iPhone and data plan rates apply. Apple CarPlay is a trademark of Apple Inc. Siri, iPhone and Apple Music are trademarks of Apple Inc., registered in the U.S. and other countries. Android Auto is a trademark of Google LLC. Children are safer when properly secured in a rear seat in the appropriate child restraint. See the Owner's Manual for more information. Full functionality requires compatible Bluetooth and smartphone, and USB connectivity for some devices. Full functionality requires compatible Bluetooth and smartphone, and USB connectivity for some devices. Map Coverage available in the United States, Puerto Rico and Canada. Before you buy a vehicle or use it for trailering, carefully review the Trailering section of the Owner's Manual.

The weight of passengers, cargo and options or accessories may reduce the amount you can tow

Before you buy a vehicle or use it for trailering, carefully review the Trailering section of the Owner's Manual. The weight of passengers, cargo and options or accessories may reduce the amount you can tow. Children are safer when properly secured in a rear seat in the appropriate child restraint. See the Owner's Manual for more information. Requires the Android Auto app on Google Play and an Android compatible smartphone running Android 5.0 or higher. Data plan rates apply. Android Auto is a trademark of Google LLC. Requires compatible iPhone and data plan rates apply. Apple CarPlay is a trademark of Apple Inc. Siri, iPhone and Apple Music are trademarks of Apple Inc., registered in the U.S. and other countries. Click here to see all Chevrolet vehicles destination freight charges.

<http://www.bosport.be/newsletter/bose-v18-manual>